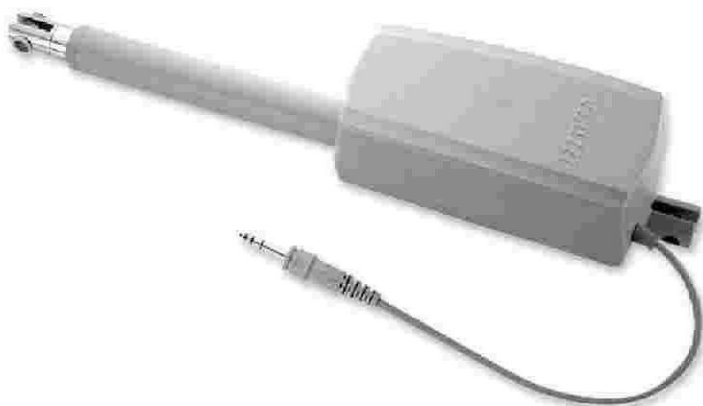


HIWIN LAN Series (4)

LAN4

CE

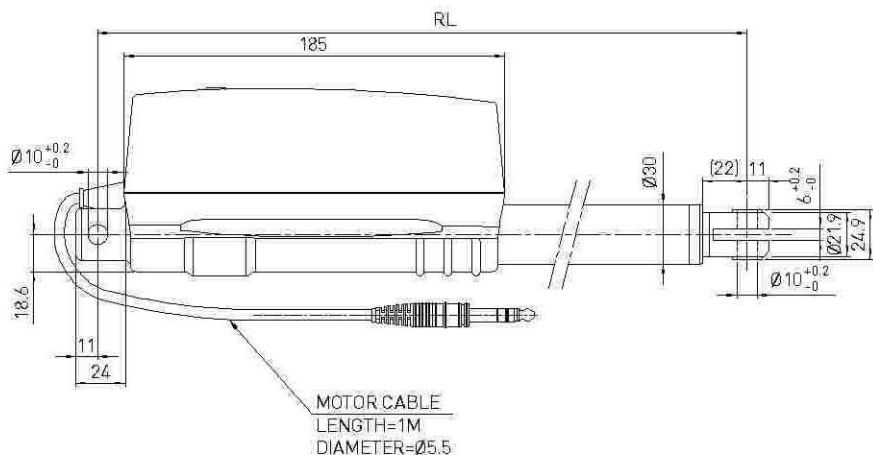
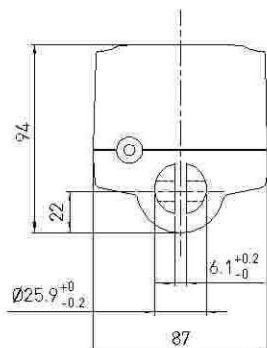
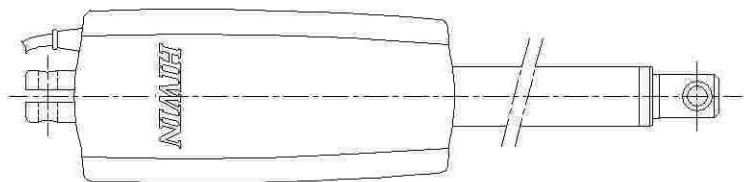


Screw type	ACME
Weight*	2.1 kg
Protection	IP 54
Working temp	+5°C ~40°C

* Stroke length 200 mm

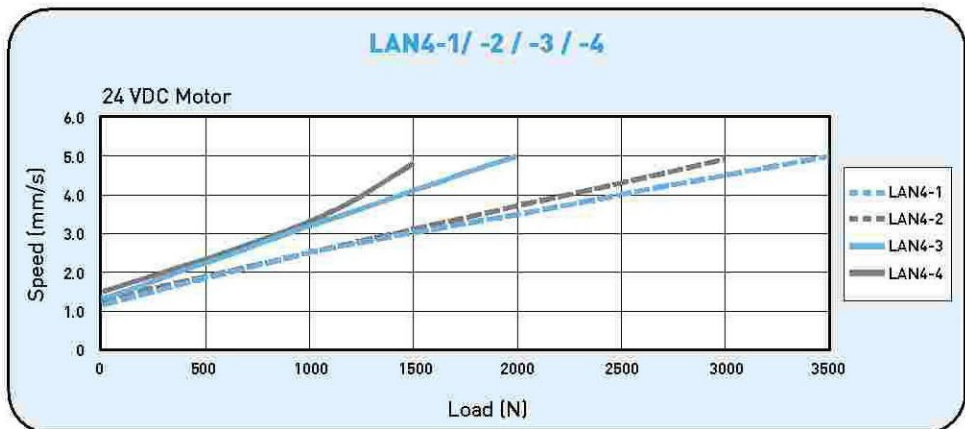
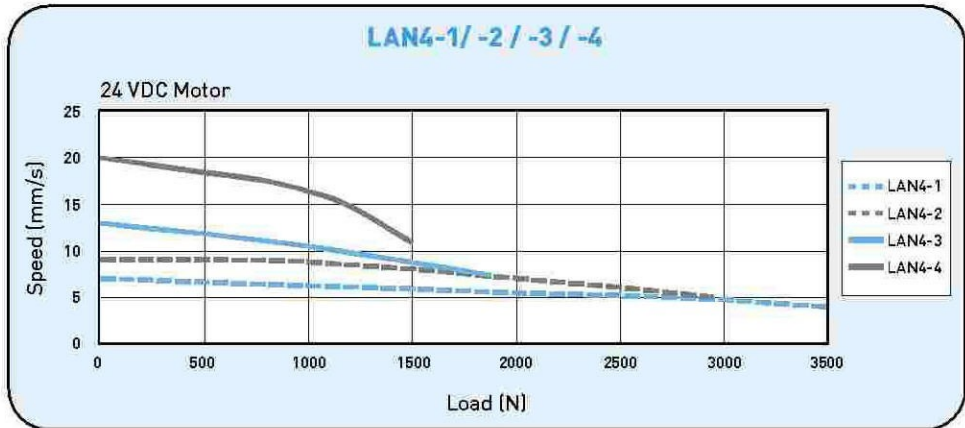
* Option: (1)IP66

- RL=S+160
RL: Retracted length
S: Stroke length



● LAN4 Specifications

Model	Thrust max. (N)	Pulling max. (N)	Holding max. (N)	force (mm/s)	Standard stroke (mm) : S								Duty cycle %	Max. current (A) 24VDC
				Load=Max.Load=0										
LAN4-1	3500	3500	3500	4 / 7	100	150	200	250	300	350	400	10	5	
LAN4-2	3000	3000	3000	5 / 9	100	150	200	250	300	350	400	10	5	
LAN4-3	2000	2000	2000	7 / 13	100	150	200	250	300	350	400	10	5	



Note: The test results are obtained by using 24VDC power supply.

● Ordering Information

