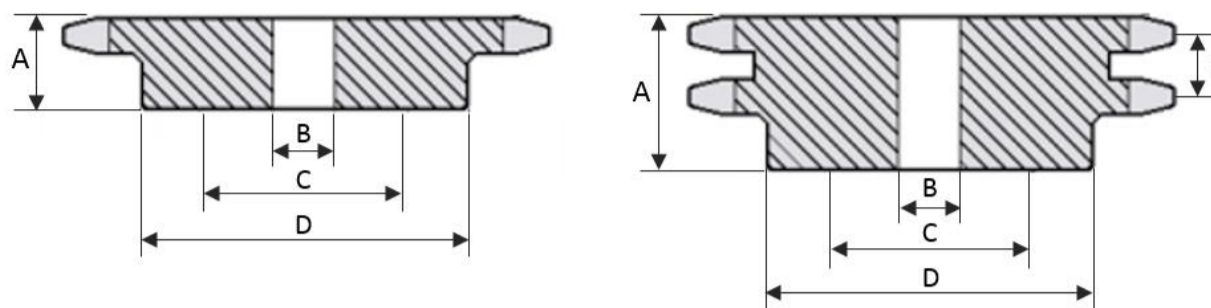




ENGRENAGEM DE TRANSMISSÃO - 3/8" - ANSI 35



Número de dentes	Diâm. Primitivo	Diâm. Externo	Diâm. Do cubo	Furo normal	Furo máximo	Referência	Altura total	Referência	Altura total	Passo transversal
							A		A	E
<b>Z</b>	Medidas encontradas em engrenagens simples e duplas					<b>SIMPLES</b>		<b>DUPLA</b>		
09	27,85	31	17	-	11	1.35.09	16	2.35.09	22	10,13
10	30,82	35	20	-	13	1.35.10	16	2.35.10	22	10,13
11	33,81	38	23	-	15	1.35.11	16	2.35.11	22	10,13
12	36,80	41	26	12	17	1.35.12	16	2.35.12	22	10,13
13	39,80	44	29	12	19	1.35.13	16	2.35.13	22	10,13
14	42,81	47	32	12	21	1.35.14	16	2.35.14	22	10,13
15	45,81	51	35	12	23	1.35.15	20	2.35.15	25	10,13
16	48,82	54	38	12	25	1.35.16	20	2.35.16	25	10,13
17	51,84	57	41	12	27	1.35.17	20	2.35.17	25	10,13
18	54,85	60	44	12	29	1.35.18	20	2.35.18	25	10,13
19	57,87	63	47	12	31	1.35.19	22	2.35.19	25	10,13
20	60,89	66	50	12	33	1.35.20	22	2.35.20	25	10,13
21	63,91	69	53	12	35	1.35.21	22	2.35.21	25	10,13
22	66,93	72	56	12	37	1.35.22	22	2.35.22	25	10,13
23	69,95	75	59	12	39	1.35.23	22	2.35.23	25	10,13
24	72,97	78	62	15	41	1.35.24	22	2.35.24	25	10,13
25	76,00	81	65	15	43	1.35.25	22	2.35.25	25	10,13
26	79,02	84	68	15	45	1.35.26	22	2.35.26	25	10,13
27	82,05	87	70	15	47	1.35.27	22	2.35.27	25	10,13
28	85,07	90	72	15	48	1.35.28	22	2.35.28	25	10,13
30	91,12	96	78	15	52	1.35.30	25	2.35.30	30	10,13
32	97,18	102	84	15	56	1.35.32	25	2.35.32	30	10,13
35	106,26	112	93	15	62	1.35.35	25	2.35.35	30	10,13

38	115,34	121	103	15	69	1.35.38	25	2.35.38	30	10,13
40	121,40	127	110	15	73	1.35.40	25	2.35.40	30	10,13
45	136,55	142	126	20	82	1.35.45	25	2.35.45	30	10,13
48	145,64	151	130	20	87	1.35.48	25	2.35.48	30	10,13
54	163,82	169	72	20	48	1.35.54	30	2.35.54	35	10,13
57	172,91	178	72	20	48	1.35.57	30	2.35.57	35	10,13
60	182,00	187	80	20	57	1.35.60	30	2.35.60	35	10,13
76	230,49	236	80	20	57	1.35.76	30	2.35.76	35	10,13
95	288,08	293	80	20	57	1.35.95	30	2.35.95	35	10,13
114	345,68	351	98	20	65	1.35.114	30	2.35.114	35	10,13