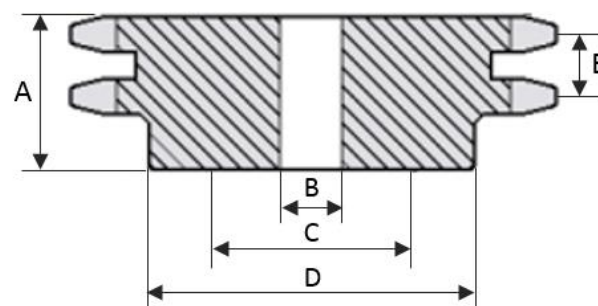
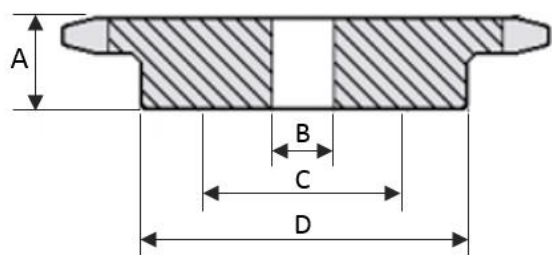




ENGRENAGEM DE TRANSMISSÃO - 1/2" - ANSI 40



Número de dentes	Diâm. Primitivo	Diâm. Externo	Diâm. Do cubo	Furo normal	Furo máximo
			D	B	C
Z	Medidas encontradas em engrenagens simples e duplas				

Referência	Altura total
	A
SIMPLES	

Referência	Altura total	Passo transversal
	A	E
DUPLA		

09	37,13	42	22	12	15
10	41,10	46	26	12	17
11	45,08	51	30	12	20
12	49,07	55	34	12	23
13	53,07	59	39	12	26
14	57,07	63	43	12	29
15	61,08	67	47	12	31
16	65,10	71	51	17,50	34
17	69,12	76	55	17,50	37
18	73,14	80	59	17,50	39
19	77,16	84	63	17,50	42
20	81,18	88	67	17,50	45
21	85,21	92	71	17,50	47
22	89,24	96	75	17,50	50
23	93,27	100	79	17,50	53
24	97,30	104	83	17,50	55
25	101,33	108	87	17,50	58
26	105,36	112	92	17,50	61
27	109,40	116	95	17,50	63
28	113,43	120	95	17,50	63
30	121,50	128	100	17,50	67
31	125,53	133	100	20	67
32	129,57	137	100	20	67
33	133,61	141	100	20	67

1.40.09	25
1.40.10	25
1.40.11	25
1.40.12	25
1.40.13	25
1.40.14	25
1.40.15	25
1.40.16	25
1.40.17	25
1.40.18	25
1.40.19	25
1.40.20	25
1.40.21	25
1.40.22	30
1.40.23	30
1.40.24	30
1.40.25	30
1.40.26	30
1.40.27	30
1.40.28	30
1.40.30	30
1.40.31	30
1.40.32	30
1.40.33	30

2.40.09	30	14
2.40.10	30	14
2.40.11	30	14
2.40.12	30	14
2.40.13	30	14
2.40.14	30	14
2.40.15	30	14
2.40.16	30	14
2.40.17	30	14
2.40.18	30	14
2.40.19	30	14
2.40.20	30	14
2.40.21	30	14
2.40.22	36	14
2.40.23	36	14
2.40.24	36	14
2.40.25	36	14
2.40.26	36	14
2.40.27	36	14
2.40.28	36	14
2.40.30	36	14
2.40.31	36	14
2.40.32	36	14
2.40.33	36	14

34	137,64	145	100	20	67	1.40.34	30	2.40.34	36	14
35	141,68	149	86	20	57	1.40.35	32	2.40.35	36	14
36	145,72	153	86	20	57	1.40.36	32	2.40.36	41	14
38	153,79	161	86	20	57	1.40.38	32	2.40.38	41	14
40	161,87	169	86	20	57	1.40.40	36	2.40.40	46	14
45	182,06	189	86	20	57	1.40.45	36	2.40.45	46	14
48	194,18	201	86	25	57	1.40.48	36	2.40.48	46	14
54	218,42	226	86	25	57	1.40.54	36	2.40.54	46	14
57	230,54	238	98	25	65	1.40.57	36	2.40.57	46	14
60	242,66	250	98	25	65	1.40.60	36	2.40.60	50	14
76	307,32	315	98	25	65	1.40.76	36	2.40.76	50	14
95	384,11	392	98	25	65	1.40.95	36	2.40.95	50	14
114	460,91	468	110	25	73	1.40.114	36	2.40.114	50	14,38