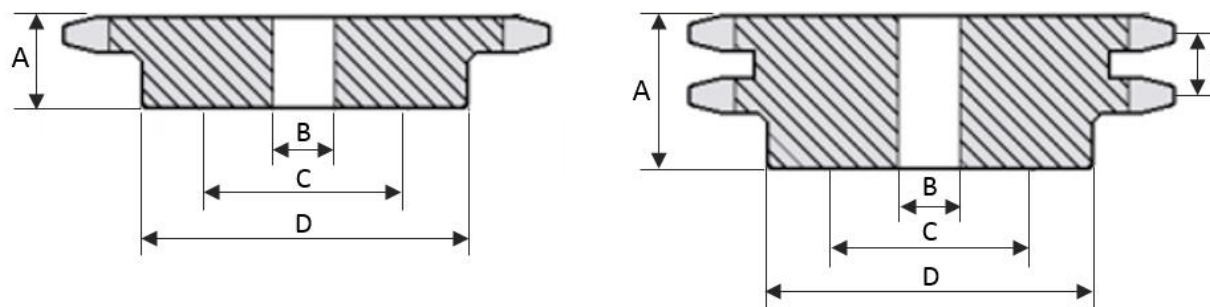




### ENGRENAGEM DE TRANSMISSÃO - 1" - ANSI 80



Número de dentes	Diâm. Primitivo	Diâm. Externo	Diâm. Do cubo	Furo normal	Furo máximo	Referência	Altura total	Referência	Altura total	Passo transversal
			D	B	C		A		A	E
<b>Z</b>	Medidas encontradas em engrenagens simples e duplas					<b>SIMPLES</b>		<b>DUPLA</b>		
09	74,26	85	45	20	30	1.80.09	30	2.80.09	60	29,29
10	82,20	93	53	20	35	1.80.10	30	2.80.10	60	29,29
11	90,16	102	61	20	40	1.80.11	30	2.80.11	60	29,29
12	98,14	110	68	20	45	1.80.12	30	2.80.12	60	29,29
13	106,14	118	76	20	50	1.80.13	30	2.80.13	60	29,29
14	114,15	127	84	25	56	1.80.14	30	2.80.14	60	29,29
15	122,17	135	92	25	61	1.80.15	30	2.80.15	60	29,29
16	130,20	143	100	25	67	1.80.16	30	2.80.16	60	29,29
17	138,23	151	110	25	73	1.80.17	30	2.80.17	60	29,29
18	146,27	159	98	25	65	1.80.18	30	2.80.18	64	29,29
19	154,32	167	98	25	65	1.80.19	36	2.80.19	64	29,29
20	162,37	176	98	30	65	1.80.20	36	2.80.20	64	29,29
21	170,42	184	98	30	65	1.80.21	36	2.80.21	64	29,29
22	178,48	192	110	30	73	1.80.22	36	2.80.22	64	29,29
23	186,54	200	110	30	73	1.80.23	36	2.80.23	64	29,29
24	194,60	208	110	30	73	1.80.24	39	2.80.24	66	29,29
25	202,66	216	110	30	73	1.80.25	39	2.80.25	66	29,29
26	210,72	224	110	30	73	1.80.26	39	2.80.26	66	29,29
27	218,79	233	110	30	73	1.80.27	39	2.80.27	68	29,29
28	226,86	241	110	30	73	1.80.28	39	2.80.28	68	29,29
30	243,00	257	110	30	73	1.80.30	39	2.80.30	72	29,29
31	251,07	265	110	30	73	1.80.31	39	2.80.31	72	29,29
32	259,14	273	110	30	73	1.80.32	39	2.80.32	72	29,29

33	267,21	281	110	30	73	1.80.33	39	2.80.33	72	29,29
34	275,28	289	110	30	73	1.80.34	39	2.80.34	72	29,29
35	283,36	297	110	30	73	1.80.35	39	2.80.35	72	29,29
36	291,43	306	110	30	73	1.80.36	39	2.80.36	72	29,29
38	307,58	322	110	30	73	1.80.38	45	2.80.38	72	29,29
40	323,74	338	110	30	73	1.80.40	45	2.80.40	75	29,29
45	364,12	378	110	30	73	1.80.45	45	2.80.45	75	29,29
54	436,84	451	110	30	73	1.80.54	45	2.80.54	75	29,29
57	461,08	476	124	35	83	1.80.57	45	2.80.57	75	29,29
60	485,33	500	136	35	90	1.80.60	45	2.80.60	75	29,29
76	614,64	629	136	35	90	1.80.76	45	2.80.76	75	29,29
95	768,22	783	150	35	100	1.80.95	45	2.80.95	75	29,29
114	921,82	937	150	35	100	1.80.114	45	2.80.114	75	29,29