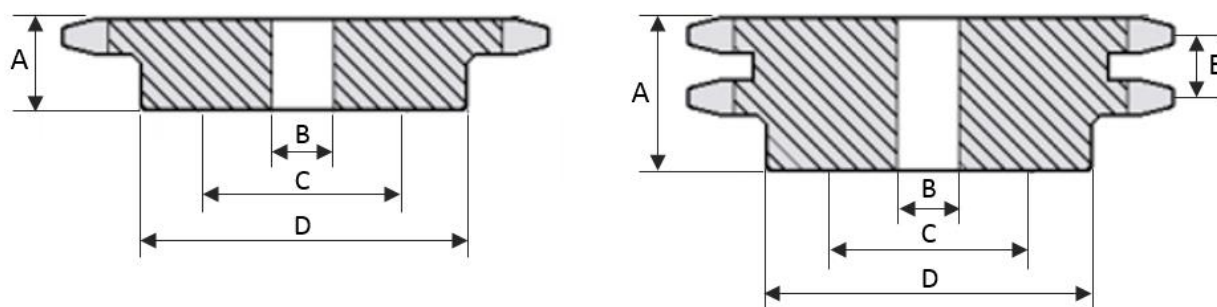




ENGRENAGEM DE TRANSMISSÃO - 1.1/4" - ANSI 100



Número de dentes	Diâm. Primitivo	Diâm. Externo	Diâm. Do cubo	Furo normal	Furo máximo	Referência	Altura total	Referência	Altura total	Passo transversal
			D	B	C		A		A	E
Z	Medidas encontradas em engrenagens simples e duplas						SIMPLES		DUPLA	
11	112,70	127	77	25	51	1.100.11	40	2.100.11	70	35,76
12	122,67	138	87	25	58	1.100.12	40	2.100.12	70	35,76
13	132,67	148	98	30	65	1.100.13	40	2.100.13	70	35,76
14	142,68	158	106	30	71	1.100.14	40	2.100.14	70	35,76
15	152,71	168	116	30	77	1.100.15	40	2.100.15	70	35,76
16	162,74	179	98	30	65	1.100.16	45	2.100.16	75	35,76
17	172,79	189	98	30	65	1.100.17	45	2.100.17	75	35,76
18	182,84	199	110	30	73	1.100.18	45	2.100.18	75	35,76
19	192,90	209	110	30	73	1.100.19	45	2.100.19	75	35,76
20	202,96	220	110	30	73	1.100.20	45	2.100.20	75	35,76
21	213,03	230	110	30	73	1.100.21	45	2.100.21	75	35,76
22	223,10	240	110	30	73	1.100.22	45	2.100.22	75	35,76
23	233,17	250	110	35	73	1.100.23	50	2.100.23	75	35,76
24	243,25	260	110	35	73	1.100.24	50	2.100.24	75	35,76
25	253,33	270	110	35	73	1.100.25	50	2.100.25	75	35,76
28	283,57	301	124	35	83	1.100.28	50	2.100.28	75	35,76

30	303,75	321	124	35	83	1.100.30	56	2.100.30	75	35,76
35	354,20	372	124	35	83	1.100.35	56	2.100.35	75	35,76
38	384,48	402	124	35	83	1.100.38	56	2.100.38	75	35,76
40	404,67	422	124	35	83	1.100.40	56	2.100.40	80	35,76
45	455,16	473	124	40	83	1.100.45	56	2.100.45	80	35,76
48	485,45	503	136	40	90	1.100.48	56	2.100.48	80	35,76
54	546,05	564	136	40	90	1.100.54	65	2.100.54	80	35,76
57	576,35	594	136	40	90	1.100.57	65	2.100.57	80	35,76
76	768,30	786	150	40	100	1.100.76	65	2.100.76	80	35,76
95	960,27	978	150	40	100	1.100.95	65	2.100.95	80	35,76
114	1.152,27	1170	150	40	100	1.100.114	65	2.100.114	80	35,76