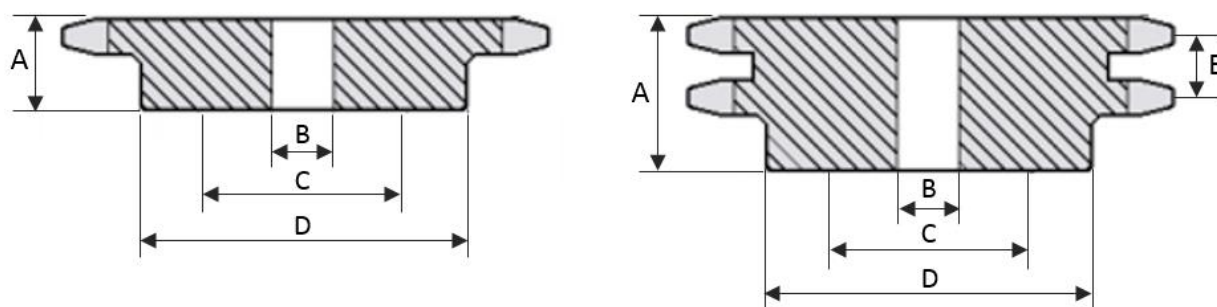




ENGRENAGEM DE TRANSMISSÃO - 1.1/2" - ANSI 120



Número de dentes	Diâm. Primitivo	Diâm. Externo	Diâm. Do cubo	Furo normal	Furo máximo	Referência	Altura total	Referência	Altura total	Passo transversal
			D	B	C		A		A	E
Z	Medidas encontradas em engrenagens simples e duplas						SIMPLES		DUPLA	
11	135,23	151	91	35	61	1.120.11	50	2.120.11	90	44,45
12	147,21	165	103	35	69	1.120.12	50	2.120.12	90	44,45
13	159,20	177	98	35	65	1.120.13	50	2.120.13	90	44,45
14	171,22	190	98	35	65	1.120.14	50	2.120.14	90	44,45
15	183,25	202	110	35	73	1.120.15	50	2.120.15	90	44,45
16	195,29	214	110	35	73	1.120.16	50	2.120.16	90	44,45
17	207,35	227	110	35	73	1.120.17	55	2.120.17	90	44,45
18	219,41	239	110	35	73	1.120.18	55	2.120.18	90	44,45
19	231,48	251	110	35	73	1.120.19	55	2.120.19	90	44,45
20	243,55	263	110	35	73	1.120.20	55	2.120.20	90	44,45
21	255,63	276	110	35	73	1.120.21	55	2.120.21	90	44,45
22	267,72	288	124	35	83	1.120.22	55	2.120.22	90	44,45
23	279,80	300	124	35	83	1.120.23	55	2.120.23	90	44,45
24	291,90	312	124	35	83	1.120.24	55	2.120.24	90	44,45
25	303,99	324	124	40	83	1.120.25	55	2.120.25	90	44,45
28	340,29	361	124	40	83	1.120.28	55	2.120.28	90	44,45

30	364,49	385	124	40	83	1.120.30	55	2.120.30	90	44,45
35	425,04	446	124	40	83	1.120.35	55	2.120.35	90	44,45
38	461,37	483	136	40	90	1.120.38	55	2.120.38	95	44,45
40	485,60	507	136	40	90	1.120.40	60	2.120.40	95	44,45
45	546,19	568	136	40	90	1.120.45	60	2.120.45	95	44,45
48	582,54	604	136	40	90	1.120.48	60	2.120.48	95	44,45
54	655,26	677	136	40	90	1.120.54	60	2.120.54	95	44,45
57	691,62	713	136	40	90	1.120.57	60	2.120.57	95	44,45
60	727,99	750	150	40	100	1.120.60	60	2.120.60	95	44,45
76	921,98	942	150	40	100	1.120.76	60	2.120.76	95	44,45
95	1.152,33	1173	150	40	100	1.120.95	60	2.120.95	95	44,45
114	1.382,72	1403	150	40	100	1.120.114	60	2.120.114	95	44,45