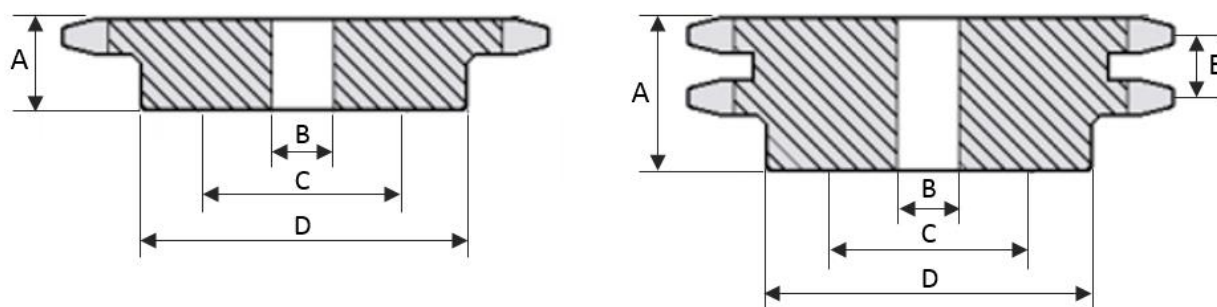




ENGRENAGEM DE TRANSMISSÃO - 1.3/4" - ANSI 140



Número de dentes	Diâm. Primitivo	Diâm. Externo	Diâm. Do cubo	Furo normal	Furo máximo	Referência	Altura total	Referência	Altura total	Passo transversal
			D	B	C		A		A	E
Z	Medidas encontradas em engrenagens simples e duplas						SIMPLES		DUPLA	
11	157,77	178	98	45	65	1.140.11	50	2.140.11	96	48,87
12	171,74	193	98	45	65	1.140.12	50	2.140.12	96	48,87
13	185,74	207	110	45	73	1.140.13	55	2.140.13	96	48,87
14	199,76	221	110	45	73	1.140.14	55	2.140.14	96	48,87
15	213,79	236	110	45	73	1.140.15	55	2.140.15	96	48,87
16	227,84	250	110	45	73	1.140.16	55	2.140.16	96	48,87
17	241,91	264	110	45	73	1.140.17	55	2.140.17	96	48,87
18	255,98	279	110	45	73	1.140.18	55	2.140.18	96	48,87
19	270,06	293	124	45	83	1.140.19	55	2.140.19	96	48,87
20	284,14	307	124	45	83	1.140.20	55	2.140.20	96	48,87
21	298,24	322	124	45	83	1.140.21	55	2.140.21	96	48,87
22	312,34	336	124	45	83	1.140.22	55	2.140.22	96	48,87
23	326,44	350	136	45	90	1.140.23	60	2.140.23	100	48,87
24	340,55	364	136	45	90	1.140.24	60	2.140.24	100	48,87
25	354,66	379	136	45	90	1.140.25	60	2.140.25	100	48,87
30	425,24	450	136	45	90	1.140.30	60	2.140.30	100	48,87

35	495,88	521	150	45	100	1.140.35	70	2.140.35	100	48,87
38	538,27	563	150	45	100	1.140.38	70	2.140.38	100	48,87
40	566,54	591	150	45	100	1.140.40	70	2.140.40	100	48,87
45	637,21	662	150	45	100	1.140.45	70	2.140.45	100	48,87
48	679,63	705	150	45	100	1.140.48	70	2.140.48	100	48,87
54	764,47	789	150	45	100	1.140.54	70	2.140.54	100	48,87
57	806,90	807	150	45	100	1.140.57	70	2.140.57	100	48,87
76	1.075,64	1099	150	45	100	1.140.76	70	2.140.76	100	48,87
95	1.344,39	1368	150	45	100	1.140.95	70	2.140.95	100	48,87
114	1.613,17	1637	150	45	100	1.140.114	70	2.140.114	100	48,87