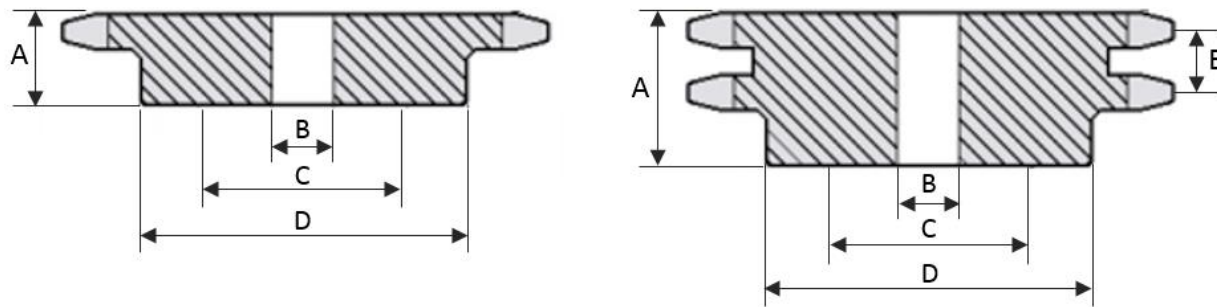




ENGRENAGEM DE TRANSMISSÃO - 2" - ANSI 160



Número de dentes	Diâm. Primitivo	Diâm. Externo	Diâm. Do cubo	Furo normal	Furo máximo	Referência	Altura total	Referência	Altura total	Passo transversal
			D	B	C		A		A	E
Z	Medidas encontradas em engrenagens simples e duplas						SIMPLES		DUPLA	
11	180,31	204	98	45	65	1.160.11	58	2.160.11	115	58,55
12	196,28	220	110	45	73	1.160.12	58	2.160.12	115	58,55
13	212,27	237	110	45	73	1.160.13	58	2.160.13	115	58,55
14	228,29	253	124	45	83	1.160.14	60	2.160.14	115	58,55
15	244,33	269	124	45	83	1.160.15	60	2.160.15	115	58,55
16	260,39	286	124	45	83	1.160.16	60	2.160.16	115	58,55
17	276,46	302	136	45	90	1.160.17	64	2.160.17	115	58,55
18	292,55	319	136	45	90	1.160.18	64	2.160.18	115	58,55
19	308,64	335	136	45	90	1.160.19	64	2.160.19	115	58,55
20	324,74	351	136	45	90	1.160.20	64	2.160.20	115	58,55
21	340,84	368	136	45	90	1.160.21	64	2.160.21	115	58,55
22	356,96	384	136	45	90	1.160.22	64	2.160.22	115	58,55
23	373,07	400	150	45	100	1.160.23	70	2.160.23	115	58,55
24	389,19	416	150	45	100	1.160.24	70	2.160.24	115	58,55
25	405,32	433	150	45	100	1.160.25	70	2.160.25	115	58,55
30	485,99	514	150	45	100	1.160.30	70	2.160.30	115	58,55

35	566,72	595	150	45	100	1.160.35	70	2.160.35	115	58,55
38	615,17	644	150	45	100	1.160.38	70	2.160.38	115	58,55
40	647,47	676	150	45	100	1.160.40	70	2.160.40	115	58,55
45	728,25	757	150	45	100	1.160.45	70	2.160.45	115	58,55
57	922,17	923	150	45	100	1.160.57	70	2.160.57	115	58,55
76	1.229,30	1256	150	45	100	1.160.76	70	2.160.76	115	58,55
95	1.536,44	1537	150	45	100	1.160.95	70	2.160.95	115	58,55
114	1.843,63	1870	150	45	100	1.160.114	70	2.160.114	115	58,55