

9.3 Heavy Load Drive



• Application:

High-load ball screw can be used for application on injection molding machines, die casting machines, general presses, power cylinders, robot ...

• Features:

1. Heavy Load

A. 2~3 times load capacity than general standard series.

- B. High axial load and acceleration.
- C. Special lubrication design for short stroke.

2. Accuracy

JIS C5 and JIS C7

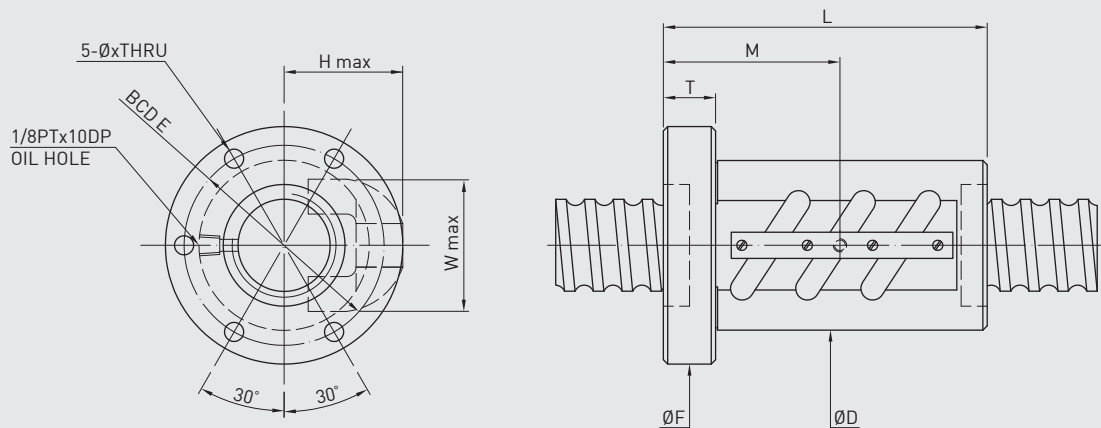
3. High Speed Operation and High Life

Enforced ball circulation systems for high speed condition and achieve long service life.

4. Option

Design in HIWIN Self-lubricant E2 Series.

BALLSCREW FOR HEAVY-LOAD DRIVE



Model No.	Shaft diameter	Lead	Turns Circuits	Dynamic C (KN)		Static C0 (KN)		D	L	F	T	E	X	H	W	M
50-16B2	50	16	2.5X2	232	23700	647	66000	95	165	127	28	110	9	68	69	101
50-16B3		16	2.5*3	330	33600	971	99100	95	213	127	28	110	9	68	69	117
55-16B2	55	16	2.5*2	242	24700	703	71700	100	165	132	28	115	9	71	74	101
55-16B3		16	2.5*3	343	35000	1054	107600	100	213	132	28	115	9	71	74	117
63-16B2	63	16	2.5*2	260	26500	811	82800	105	165	137	28	120	9	73	82	101
63-16B3		16	2.5*3	368	37600	1217	124200	105	213	137	28	120	9	73	82	117
80-16B2	80	16	2.5*2	289	29500	1029	105000	120	170	158	32	139	11	81	98	106
80-16B3		16	2.5*3	409	41800	1543	157500	120	218	158	32	139	11	81	98	122
80-25B3		25	2.5*3	684	69800	2186	223100	145	338	185	40	165	11	102	100	140
100-16B3	100	16	2.5*3	453	46200	1949	198900	140	218	178	32	159	11	91	117	122
100-25B3		25	2.5*3	763	77800	2740	279600	159	338	199	40	179	11	109	118	140
100-25B4		25	2.5*4	977	99700	3654	372800	159	413	199	40	179	11	109	118	165